



## Funding Bulletin - July 2008

This newsletter was compiled by T3SC with information from NAVCA, Fit4Funding and direct from funders themselves. It showcases just a few of the hundreds of funding opportunities T3SC have information on.

Our Support and Development Team can also offer assistance with putting together a quality funding bid; please get in touch to see how we can work with you to help you achieve your aims.

### Alcohol Education and Research Council Grant programmes

**Priorities/details:** The main aims of the Council are to increase the capacity of individuals and organisations to deal with alcohol issues and also to develop the evidence base.

**Who for?** Two types of projects will be considered. **Research projects** that focus upon improving the evidence base. The second will aim to **develop people and organisations**. The Alcohol Education and Research Fund can only be used to pay for project activities that are outside the responsibilities of central or local government agencies and services. Will fund projects not general support. In all applications a sound evaluation will be required.

**Grant amount:** Developing People and Organisations grants are between £5,000 and £50,000. The Council is seeking value for money and expects to fund four or five projects of around £50,000. Nevertheless, a more expensive project could be successful if it was convincingly giving value. Projects should be completed in one, two or three years. The Council will fund small projects up to a maximum of £5,000. Small grants could fund small research projects, pilot research studies or demonstration projects with a strong evaluation component.

**Application process:** Application forms are available on the website.

**Deadlines:** Small grants will be rapidly processed throughout the year with no deadline.

**Further information:** More details and applications forms are available at: [www.aerc.org.uk](http://www.aerc.org.uk), Tel: 020 7340 9502.

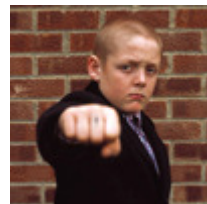
### UK Film Council funding

**Priorities/details:** UK Film Council fund script development, film production, short films, film export and distribution, cinemas, film education, culture and archives, festivals and audience support schemes.

**Who for?** The aim of the **Development Fund** is to broaden the quality, range and ambition of film projects being developed in the UK and to build a talent-driven home for writers, directors and producers.

**Premiere Fund** - aims to invest in talented filmmakers and in commercial films with wide audience appeal in the UK and worldwide. The annual budget of the Premiere Fund is £8 million a year and on average the Premiere Fund invests in 8-9 films per annum.

**New Cinema Fund** - New Cinema Fund encourages unique ideas, innovative approaches and original voices. It aims to finance films with passion and



verve that connect with a broad range of audiences investing £5 million a year.

**Prints and Advertising Fund** - The Prints and Advertising Fund supports the distribution and marketing strategy of 'specialised' films and has recently launched a UK Film Festivals Fund.

**Grant amount:** Film Development Programme - £25,000 will be offered to screenwriters/writer-directors to write and develop a feature film.

**Further information:** [www.ukfilmcouncil.org.uk/funding](http://www.ukfilmcouncil.org.uk/funding), Tel: 020 7861 7861

## Hedley Foundation

**Priorities/details:** The Hedley Foundation has assets of some £20 million. It is a registered company and a charity. The main objective of the Trustees' grant-making is to assist and encourage development and change. It follows that most grants will be of capital or one-off nature, but the Trustees sometimes agree to help fund the introduction of new and innovative projects with a series of up to three annual grants.

**Who for?** A charitable foundation which supports young people, the disabled and the terminally ill.

**Grant amount:** Few grants exceed £5,000 and most of them go to charities where they can make an impact. Do not support large or national appeals.

**Application process:** Applications can be downloaded from the website, should be typed and then printed off and sent to the address below accompanied by your e-mail address or a self-addressed envelope.

**Deadlines:** The Trustees meet six times a year. The closing date for a meeting is three weeks beforehand.

**Further information:** Mrs Pauline Barker, The Hedley Foundation, 1-3 College Hill, London EC4R 2RA Email: [pbarker@hedleyfoundation.org.uk](mailto:pbarker@hedleyfoundation.org.uk)  
[www.hedleyfoundation.org.uk/](http://www.hedleyfoundation.org.uk/)

## Sport Relief 2006-2008

**Priorities/details:** Sport Relief aims to support projects that use sport and exercise to strengthen communities and provide opportunities for people who are excluded or disadvantaged. This money is being distributed in two ways.

The Community Foundations Programme

Over the next two years, up to £4million of Sport Relief money is being distributed through Community Foundations focusing on community groups that are using sport and exercise to: increase access to sport and exercise for people who face social exclusion and isolation; help people who are experiencing difficulties in their lives to regain their confidence and self esteem.

The UnLtd Sport Relief Awards programme

These grants will support young people aged between 11 and 21 to set up projects that use sport and recreational activities to tackle conflict in their local area and improve community relations.

**Grant amount:** The Community Foundations Programme - up to £10,000

The UnLtd Sport Relief Awards programme - up to £5,000

**Deadlines:** UnLtd Sport Relief Awards will be closing to all applications on the 1 October 2008.



**Further information:** [www.comicrelief.com](http://www.comicrelief.com)

UnLtd Sport Relief Awards - [www.unltd.org.uk](http://www.unltd.org.uk), 0845 850 1122,

The Community Foundations Programme - [www.communityfoundation.co.uk](http://www.communityfoundation.co.uk),  
0161 214 0940.



### **Age Concern Grants**

**Priorities/details:** The Grants Unit gives out over £11 million each year in grants.

**Who for?** The grants programmes open to voluntary organisations are:  
Barclays Programme - The Barclays grants programme is open to voluntary organisations who have an income or turnover of less than £50,000 per annum.

Bright Ideas - The Bright Ideas grants programme is open to most voluntary organisations who have an income or turnover of less than £200,000 per annum.

**Grant amount:** Barclays Programme - The scheme offers Grants of up to £150 towards new or expanding services or activities which directly benefit older people.

Bright Ideas - The scheme offers grants of up to £2,000 towards new or expanding services or activities which directly benefit older people.

**Application process:** Download the guidelines and application forms

**Deadline:** 17 July 2008.

**Further information:** Grants Helpline Tel: 0208 765 7738. Free helpline Tel: 0800 00 99 66,

[www.ageconcern.org.uk/AgeConcern/grants\\_members.asp](http://www.ageconcern.org.uk/AgeConcern/grants_members.asp)



## **Lloyds TSB Foundation** for England and Wales

### **£4 million continuation fund for ex-prisoner charities**

**Priorities/details:** The Lloyds TSB Foundation for England and Wales is investing an additional £4 million into previously funded charities supporting the reintegration of ex-prisoners into the community. The new fund will enable charities to build on their programmes over a longer period of time to provide a more sustainable path forward. The Ex-prisoners Continuation Programme will be open to qualifying charities which have received Lloyds TSB Foundation funding from 2005 to 2007. Previous work in this area focused on:  
Re-establishing individuals within their family following a prison sentence;  
Addressing the specific needs of this diverse population;  
Addressing the mental health needs of individuals who have served a prison sentence.

**Who for?** The programme is a closed programme and only qualifying charities can apply. Charities that have received a grant between 2005 and 2007 can apply for up to three years' funding to continue their work to help ex-prisoners reintegrate into the community.

**Grant amount:** Qualifying charities will be able to apply for grants of up to three years with a minimum grant of £20,000.

**Application process:** Invitations to apply will be sent out to qualifying charities by end of March 2008.

**Deadline:** 31 July 2008.

**Further information:** [www.lloydstsbfoundations.org.uk](http://www.lloydstsbfoundations.org.uk)

Email: [enquiries@lloydstsbfoundations.org.uk](mailto:enquiries@lloydstsbfoundations.org.uk), Tel: 0870 411 1223

## Lloyds TSB Foundation – Community Programme

**Priorities/details:** The Foundation's mission is to support and work in partnership with recognised charitable organisations which help people, especially those who are **disadvantaged** to play a fuller role in communities throughout England and Wales. They focus support on smaller under funded charities (with an annual income over £1million) and will support established work as well as new. They aim to support project that address disadvantage and expect to see:

- evidence of the needs within your community
- how your beneficiaries are disadvantaged
- Information concerning the issues your organisation is trying to address and what outcomes you are trying to achieve
- how the proposal or the work enables people to play a fuller part in their community?

They will fund salaries including sessional fees, Running costs/overheads, Rent, Utilities, Training, Volunteers expenses. Please note, they will not fund capital costs.

**Grant amount:** Maximum grant is £75,000 over three years

**Application process:** Complete an eligibility form on the website, you will then be contacted by relevant team member to discuss further. Or you can contact the Relevant Team directly to discuss your ideas. You may be invited to submit an application for requests £5k and below or we will ask to visit you *before* we invite you to apply. Applications are no longer available to download from the website.

**Further information:** [www.lloydstsbfoundations.org.uk](http://www.lloydstsbfoundations.org.uk)

Contact Michelle Lester, email [guidelines@lloydstsbfoundations.org.uk](mailto:guidelines@lloydstsbfoundations.org.uk)

## Hilton in the Community Foundation

**Priorities/details:** The Foundation makes grants to a wide range of charities and organisations that meet one of our three chosen areas of focus: Young People – Education; Young People – Health; Disaster Relief and International Fund. Since 2005, in response to huge ongoing demand from charities and good causes, Hilton Hotels agreed to donate a limited number of accommodation vouchers for use by charities for raffle or auction prizes at their fundraising events. The Foundation manages this process and to enter the monthly draw to receive a voucher, requests should be made by email.

**Grant amount:** Grants up to £5,000, up to a maximum of £50,000 (per year). Funding can be requested for up to three years for any particular project.

**Application process:** Via an application form available from the website.

**Deadlines:** 4 August 2008 for Grants Committee Meeting 3 September 2008; 28 October 2008 for Grants Committee Meeting 29 November 2008.

**Further information:** [www.hilton-foundation.org.uk](http://www.hilton-foundation.org.uk), Tel: 020 7605 7733,

Email: [info@hilton-foundation.org.uk](mailto:info@hilton-foundation.org.uk)



## Church and Community Fund (Church of England)

**Priorities/details:** Does your parish have a project involving greater outreach into the community for which it is seeking support? The Fund helps with imaginative and innovative projects of all kinds. CCF has four themes: engaging with social issues; equipping to evangelise; welcoming and encouraging children and young people; developing the ministry of all. Typical projects supported by the CCF might include employing a youth worker, renovating an old church hall for use as a community centre, providing hot meals for the homeless in a church room and much more. The CCF will support both capital and revenue projects as well as some preliminary costs such as feasibility studies or professional fees. In brief, all projects should seek to strengthen the relationship between the church and the local community/ies, should benefit the Church locally and as a whole, and should manifest a sense of vision in responding to need(s).

**Grant amount:** The maximum grant is £15,000.

**Application process:** Via an application form.

**Deadlines:** 13 August 2008, 5 November 2008.

**Further information:** [www.churchandcommunityfund.org.uk](http://www.churchandcommunityfund.org.uk)

Tel: 020 7898 1767, Email: [ccf@c-of-e.org.uk](mailto:ccf@c-of-e.org.uk)

## Red Nose Day UK programmes 2005-08

**Priorities/details:** The programme areas: Young People; (around issues of alcohol, mental health and those being sexually exploited or trafficked); Older People; Mental Health; Refugees and Asylum Seekers; Domestic Violence. They make two types of grants in their open programmes. Main Grants and Small Grants. Available in the following three programmes only: Disadvantaged Communities; Older people; Mental health.

**Who for?** Groups and organisations throughout the UK - These are usually registered charities but they also fund some constituted groups with a written set of rules with charitable objectives.

**Grant amount:** Main Grants - Grants over £5000, Small Grants - Grants up to £5000. They can give grants for running costs and capital costs, depending on the programme you are applying to. There is no maximum grant size and the amount you ask for should be the amount you need. Some large grants, and a range of smaller grants of between £15,000 and £30,000 each year. They also have a fast-track application process for small grants up to £5000. If you want to apply for more than £100,000 in total, please phone them before you apply.

**Application process:** Application form available on the website

**Deadlines:** For grants over £5000 the next deadline is 15 August 2008. For grants under £5000 there is no deadline.



**Further information:** [www.comicrelief.com](http://www.comicrelief.com), Tel: 0207 820 5555, Email: [red@comicrelief.org.uk](mailto:red@comicrelief.org.uk)

### **Joanies Trust - Grant giving policy and guidelines 2008**

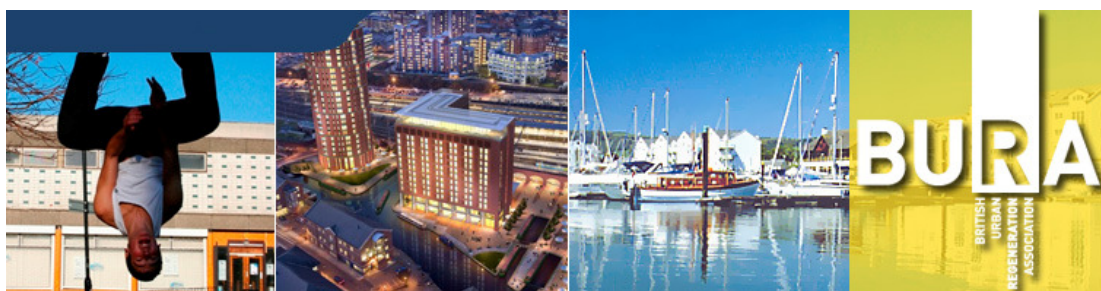
**Priorities/details:** Supporting Young People - organisations working with young people aged 11 to 25. They want to support projects that offer intensive support as well as those that promote preventative work, and specially those that are designed to lead to individual development through integration, work opportunities or accreditation. They will look for strong evidence of how closely applicants consult young people in developing their service, and for any community involvement or local financial support. They will look for strong evidence of how closely applicants consult young people in developing their service, and for any community involvement or local financial support. They will not commit themselves to awarding grants to an organisation for more than one year, though you are welcome to reapply 12 months after the first application.

**Application process:** Download application forms from the website.

**Deadlines:** 31 August 2008.

**Further information:** [www.joaniestrust.org.uk/pages/Joaniesguidelines.htm](http://www.joaniestrust.org.uk/pages/Joaniesguidelines.htm)

Tel: 01531 633345



### **The Waterways Renaissance Awards 2008**

**Priorities/details:** The Waterways Renaissance Awards, administered by BURA in conjunction with The Waterways Trust, will be launching their call for entries very soon. They are expected to be open for entries between July and September 2008. The waterways renaissance encompasses all types of projects and developments. As well as innovative engineering schemes, exciting multi-use developments and sustainable environmental initiatives, local communities are also investing time and energy in their waterways and reaping the benefits by creating cleaner, safer public spaces.

Whatever the scale, from small community project to mass property development there's sure to be a category you can enter. You can enter across ten different categories: Area Based Regeneration / Community / Design and Construction / Education and Learning / Historic Environment / Innovation / Natural Environment / Partnership / Recreation and Tourism / Strategy and Masterplanning.

**Further information:** Detailed information on how to enter will be available soon at Website: [www.bura.org.uk/awards](http://www.bura.org.uk/awards) , in the meantime contact Email: [eva@bura.org.uk](mailto:eva@bura.org.uk) or Tel: 020 7539 4030.

## Queen's Award for Voluntary Service

**Priorities/details:** The Queen's Award for Voluntary Service is equivalent to the MBE and recognises the outstanding contribution that volunteers make to their local communities.

**Who for?** It's easy to nominate Queen's Award for Voluntary Service.

\*You can nominate a group (two or more people) if it is based in the UK. The group has to have been volunteering for the benefit of people in the UK or overseas for at least three years. More than half its members must be volunteers who have the right of residence in the UK. Groups solely concerned with fundraising for charitable purposes are not eligible.

**Award:** The Lord Lieutenant of the county, as the Queen's representative, will present each group with a certificate, signed by the Queen, and a commemorative crystal at a local ceremony. Award recipients are entitled to use the Queen's Award emblem on their website, stationery and other printed material. Four representatives of each successful group will also be invited to an annual royal garden party at Buckingham Palace in London or the Palace of Holyroodhouse in Edinburgh.

**Further information:** Email: [queensaward@consol.co.uk](mailto:queensaward@consol.co.uk) Tel: 020 7781 2397  
[www.queensawardvoluntary.gov.uk](http://www.queensawardvoluntary.gov.uk)

## ARTS

### Youth Music - programmes

**Priorities/details:** Youth Music works alongside the formal and community-based sectors to support music-making and training. Their funding complements music in the national curriculum by supporting activities held mainly outside of school hours and delivered by non-profit making organisations. Youth Music also aims to support wider aspects of music-making through funding training for music leaders, as well as working strategically to bring together partnership organisations from across the music, education and social sectors.



Youth Music distributes its funds in a variety of ways including: Open Programmes - open for general application

**Current open programmes:**

**First Steps** - They have created the First Steps programme to encourage and support regular creative music-making activities for children between 0 and 5 years, especially those who would otherwise lack the chance to take part.

**Make It Sound** - Make It Sound focuses on music-making for 5-18 year olds who otherwise lack the chance to take part.

**Vocalise!** - Vocalise! supports music-making where the voice is the main instrument.

**Who for?** Funding is available to not-for-profit organisations over a period of six to 24 months; Participants must be 0-18 (or up to 25 year olds with special educational needs (SEN), disabilities or in detention); Organisations over one year old; Activities that involve training and development; Structured music-making activities which are planned to advance children and young people's

music skills; Music-making activity must take principally outside of school hours.

**Grant amount:** First Steps - between £5,000 and £15,000 for a period of no less than 6 months and no more than 12 months.

Make It Sound - between £10,000 and £30,000. Be for a period of no less than 6 months and no more than 24 months.

Vocalise! - between £5,000 and £20,000 for a period of no less than 6 months and no more than 18 months.

**Application process:** Application forms available online.

**Further information:** [www.youthmusic.org.uk/looking\\_for\\_funding.jsp](http://www.youthmusic.org.uk/looking_for_funding.jsp)

Tel: 020 7902 1060, [info@youthmusic.org.uk](mailto:info@youthmusic.org.uk)

## European Commission - Crossing Borders – Connecting Cultures

**Priorities/details:** The Culture Programme is a single multi-annual programme proposing funding opportunities to all cultural sectors and all categories of cultural operators contributing to the development of cultural cooperation at European level. The programme mainly promotes: trans-national mobility of cultural players; trans-national circulation of artistic and cultural works and products; intercultural dialogue and exchanges.

It is composed of three strands, corresponding to three different levels of intervention: Support for Cultural Projects (Strand 1), encompassing: multi-annual cooperation projects (Strand 1.1) - deadline: 1 October 2008; cooperation projects (Strand 1.2.1) - deadline: 1 October 2008; literary translation projects (Strand 1.2.2) - deadline: 1 February 2009; cooperation projects with third countries (Strand 1.3) - deadline: 1 May 2009.

Support for organisations active at European level in the field of culture (Strand 2) - deadline: 1 November 2008.

Support for analyses and dissemination activities (Strand 3)

The Executive Agency manages the main parts of these three strands.

**Who for?** Trans-national cultural projects

**Grant amount:** With a total budget of 400 millions euros for 2007-2013, the Culture programme is jointly run by the European Commission (Education and Culture Directorate General) and the Education, Audiovisual and Culture Executive Agency.

**Further information:** [http://eacea.ec.europa.eu/culture/index\\_en.htm](http://eacea.ec.europa.eu/culture/index_en.htm)

## HEALTH



### Healthy Community Challenge Fund: Invitation to local areas to be 'Healthy Towns'

**Priorities/details:** Two thirds of adults and a third of children in the UK are either overweight or obese, and work by the Government Office for Science's Foresight programme suggests that, without action, these figures will rise to almost nine in ten adults and two thirds of children by 2050. In response to this challenge, in January 2008, the Government published Healthy Weight, Healthy Lives: a cross-government strategy for England. The purpose of the fund is to test and evaluate different approaches to making regular physical

activity and healthy food choices easier for local communities, with the aim of preventing overweight and obesity in England. Successful applicants will be designated 'Healthy Towns', to acknowledge their commitment and aspiration to promoting health in their communities.

**Who for?** Local areas are invited to submit an expression of interest in the Government's Healthy Community Challenge Fund. Applications are welcome from all local areas. They must, however, be submitted jointly by the local authority and PCT.

**Grant amount:** The Healthy Communities Challenge Fund can provide revenue funding of up to approximately £5 million to each local area over a three year period, between 2008/09 and 2010/11. Localities will be expected to contribute additional funding to at least match the grant they receive from Government.

**Application process:** The criteria for making an application and the process for selecting which areas receive funding can be downloaded from the website.

**Deadlines:** Expressions of interest in the Healthy Town programme should arrive no later than 5pm on 11 July 2008.

**Further information:** [www.dh.gov.uk/en/Publicationsandstatistics](http://www.dh.gov.uk/en/Publicationsandstatistics)

## Department of Health: The Social Enterprise Investment Fund

**Priorities/details:** In 2008/09, the Department of Health is making £11 million capital and £6 million revenue funding available to new and existing social enterprises delivering health and social care services. The government defines a social enterprise as 'a business with primarily social objectives whose surpluses are principally reinvested for that purpose in the business or in the community, rather than being driven by the need to maximise profit for shareholders and owners.'

**Who for?** Organisations that can apply for this funding include: Multi-agency partnerships, particularly voluntary and community groups wishing to use their expertise to provide services across health and social care; Existing social enterprises looking to expand into health and social care; Groups of professionals (e.g. nurses, therapists), seeking to form a social enterprise to deliver their services.

**Grant amount:** No minimum amount, but there is a maximum any one investment of £10,000,000. Development grants of up to £20,000 to cover start up costs.

**Application process:** Application form available on the website.

**Deadlines:** 31 July 2008.

**Further information:** Website: [www.dh.gov.uk](http://www.dh.gov.uk), Email: [socialenterprisefund@dh.gsi.gov.uk](mailto:socialenterprisefund@dh.gsi.gov.uk), Tel: 020 7633 4156

## LOTTERY UPDATE

### BIG - Reaching Communities - England

**Priorities/details:** Reaching Communities has proven to be a very popular and highly competitive programme. Any new applicant should note the high levels of interest in this programme and consider whether your project is not better suited to another Big Lottery Fund



programme. Currently 24% of applications are successful. They want to bring about the following changes as a result of their funding through this programme: people having better chances in life, including being able to get better access to training and development to improve their life skills; strong communities, with more active citizens, working together to tackle their problems; improved rural and urban environments, which communities are better able to access and enjoy; healthier and more active people and communities.

**Who for?** Reaching Communities want to fund projects that respond to needs identified by communities, and actively involve them. They want to fund projects that help those most in need including those people or groups who are hard to reach.

**Grant amount:** Reaching Communities will give grants of more than £10,000 and up to £500,000, including a maximum of £50,000 for capital grants. They will fund projects for up to five years.

**Application process:** Via application form.

**Deadlines:** Currently there is no closing date announced but it is due to close late this year.

**Further information:** BIG Advice Line Tel: 0845 410 2030,

[www.biglotteryfund.org.uk/prog\\_reaching\\_communities](http://www.biglotteryfund.org.uk/prog_reaching_communities)

## **BIG Research programme - UKwide**

**Priorities/details:** The Big Lottery Fund will provide up to £25 million in the UK over 2007-2009 to fund social and medical research grants in the UK. The aim of the Research Programme will be to influence local and national policy and practice by funding the Third Sector to produce and disseminate evidence based knowledge. In the longer term the programme, through producing sound evidence, will aim to help develop better services and interventions for beneficiaries. Integral to meeting the aim of the programme will be the following five outcomes: Improved understanding of issues relating to the Big Lottery Fund's UK themes and country outcomes; Improved Third Sector participation and knowledge in developing, doing and using research; Improved dissemination of Third Sector led research; Increased participation of beneficiaries and users in a range of research roles; Improved partnerships between the Third Sector and the research community.

**Who for?** Help is available to organisations that wish to do research, so that they have the skills and expertise to lead an application.

**Grant amount:** £25 million total.

**Application process:** Application form available through the website

**Deadlines:** The deadline for Round 2: 12 September 2008 and Round 3 deadline: 30 March 2009.

**Further information:** Tel: 0845 0711068,

Email: [researchprogramme@aeat.co.uk](mailto:researchprogramme@aeat.co.uk) Websites:

[www.bigresearchprogramme.org.uk](http://www.bigresearchprogramme.org.uk), [www.biglotteryfund.org.uk](http://www.biglotteryfund.org.uk)



## **Heritage Lottery Fund - Parks for People**

**Priorities/details:** Three-year joint initiative between Heritage Lottery Fund and the Big Lottery Fund (BIG)

helps with the restoration and regeneration of public parks and gardens, including squares, walks and promenades in England.

**Who for?** Although they expect most applications through this programme to be led by local authorities, they welcome application from other not-for-profit organisations that own public parks.

You can apply if: You will also have to show them that: your community values the park as part of their heritage; the parks meets local social, economic and environmental needs; and the park actively involves local people. You will need to raise at least 25% of your project costs from other sources, either as cash or non-cash contributions (this is your partnership funding). At least 5% of this partnership funding must be cash from your own resources.

**Grant amount:** £250,000 to £5million (project planning grants of up to £50k are available).

**Application process:** Two-stage application process.

**Deadlines:** The final deadline for stage one applications is 30 September.

**Further information:** [www.hlf.org.uk](http://www.hlf.org.uk), Email: [enquire@hlf.org.uk](mailto:enquire@hlf.org.uk) , Tel: 020 7591 6000

## BIG - Changing Spaces

**Priorities/details:** Changing Spaces is an environmental programme focusing on three priority areas – community spaces, local community enterprise and access to the natural environment. It will invest around £200 million in environmental projects across England. The programme is being delivered in partnership with other organisations who are either delivering a large strategic portfolio or an England wide, open grants programme on our behalf. These are:



**Local Food programme** (run by the Royal Society of Wildlife Trusts) – will fund organisations that will deliver a variety of food related projects to make locally grown food more accessible and affordable to local communities. For more information visit [www.localfoodgrants.org](http://www.localfoodgrants.org)

**Community Spaces programme** (run by Groundwork UK) – this funds community groups who want to improve local green spaces such as play areas, community gardens, parks, wildlife areas and village greens. For more information visit [www.community-spaces.org.uk](http://www.community-spaces.org.uk)

**Community Sustainable Energy programme** (run by Building Research Establishment) - this will pay for community-based organisations to install renewable energy technologies and energy saving measures. For more information visit [www.communitysustainable.org.uk](http://www.communitysustainable.org.uk)

**Access to Nature programme** (run by Natural England) – this will fund a range of organisations who want to encourage people from all backgrounds to learn more about and enjoy the natural environment. For more information visit [www.naturalengland.org.uk/accesstonature](http://www.naturalengland.org.uk/accesstonature)

**Ecominds programme** (run by Mind) – this programme is due to launch in spring or summer 2008. It will fund a range of groups who want to encourage people with experience of mental distress to get involved in environmental projects, such as improving open spaces and wildlife habitats, designing public art and recycling. For more information visit [www.ecominds.org.uk](http://www.ecominds.org.uk)

**Further information:** If you have a project that you think fits under one of

the programmes visit the websites listed on this page or call the Changing Spaces Advice Line Tel: 0845 3671 671, (textphone: 0845 602 1659).  
[www.biglotteryfund.org.uk](http://www.biglotteryfund.org.uk)

## ENVIRONMENT

### GreenPrints

**Priorities/details:** Aged 16-25? Want to make your mark on the environment? GreenPrints is an England-wide volunteering programme offering opportunities for you to simply turn up and take part in one or two-day conservation events.

**Who for?** Projects should be designed, created and actively led by volunteers aged 16 - 25. Flagship projects should focus on improving an outdoor space which is open to the public. That could be a park, playing field, river, beach or cycle path. The space isn't too important – it's how you improve it that matters.

**Grant amount:** Groups can apply for up to £10,000 and practical support from an experienced GreenPrints Mentor.

**Application process:** Guidance and application form on website.

**Deadline:** 22 August 2008.

**Further information:** The GreenPrints programme is managed by SITA Trust. Email: [greenprints@sita.co.uk](mailto:greenprints@sita.co.uk), Tel: 01454 262910, [www.sitatrust.org.uk/greenprints/apply/flagships](http://www.sitatrust.org.uk/greenprints/apply/flagships)



### Energy Saving Trust

**Priorities/details:** The O2 Energy Saver Fund is a joint initiative between O2 and the Energy Saving Trust. It has been designed to help **local communities** of between 10-25 households to install energy saving measures in their home that will help in the fight against climate change. If an application is successful a 'hit squad' will be sent into individual's homes to install priority insulation measures. The Energy Saving Trust also runs the **free Café (Community action for Energy)** programme. CAfE is a network of people who share a common interest in community energy projects and ideas.

Finally public sector and not for profit organisations can apply for funding through the **Low Carbon Building Programme** Phase 2 (managed by the Building Research Establishment (BRE) which offers funding for micro generation technology.

**Application process:** Online

**Further information:** For more information on the initiative please see the website: [www.energysavingtrust.org.uk/cafe/welcome/](http://www.energysavingtrust.org.uk/cafe/welcome/)

To access the Café funding database please see:

[www.energysavingtrust.org.uk/cafe/funding/](http://www.energysavingtrust.org.uk/cafe/funding/)

Low Carbon Building Programme:

[www.lowcarbonbuildingsphase2.org.uk/page.jsp?id=2](http://www.lowcarbonbuildingsphase2.org.uk/page.jsp?id=2)



### WRAP – Third Sector Funding

**Priorities/details:** WRAP (Waste and Resources Action Programme) has launched a new programme that will help increase third sector capacity on

waste and resource management. Over the next few years, they hope that their collective work will continue to enable businesses and consumers alike to engage in actions to ensure more efficient use of our natural resources which in turn helps to combat climate change.

The intention to set up the Third Sector Capacity Building Programme was announced by Department for Environment, Food and Rural Affairs (DEFRA) as part of the Department's 2007 Waste Strategy. DEFRA will be allocating a total of £4 million over the next three years to fund WRAP's work on the programme, including a £1.3 million spend in this financial year alone.

**Deadline:** Capacity Building support to Third Sector Organisations framework contract closing date: 25 July 2008.

**Further information:** Keep an eye on their website for funding and tender opportunities from this programme.

[www.wrap.org.uk/wrap\\_corporate/tenders/capacity\\_building.html](http://www.wrap.org.uk/wrap_corporate/tenders/capacity_building.html)

Helpline Tel: 0808 100 2040.



## It's your Community

**Priorities/details:** It's your Community celebrate all the fantastic projects happening up and down the country every week, thanks to their community awards. Awards should be for the benefit of the community, or to build community spirit. If your idea is any of the following: a physical improvement that you can touch; likely to make real, tangible results that you can see; demonstrates fresh, bold thinking, and is innovative enough to inspire others. Why not apply and see what you can do?

**Who for?** Some examples of the types of projects:

Community Places – Improving the places communities share

Revitalising and reinvigorating your community spaces.

Community People – Helping bring people together

To help create a community where people are valued and respected, where there's a real sense of unity and belonging.

Community Pride – Tackling issues head on and restoring a sense of pride

Helping put the pride back into your community.

Community Landscape – Improving communities natural environments

Improving the natural environments where we live.

**Grant amount:** From £100 and up to £1,000

**Application process:** Apply online

**Further information:** [www.itsyourcommunity.co.uk/ApplyForAnAward.aspx](http://www.itsyourcommunity.co.uk/ApplyForAnAward.aspx)

## NEWS

### Fundraise on eBay.co.uk

**Priorities/details:** eBay for Charity will help you raise funds and awareness with 21 million eBay users in the UK, and 255 million worldwide.

**Receive donations** - Anyone can give to your charity when they sell on eBay. Rally your supporters, who can give 10%-100% of their eBay sales to your charity.



**Trading on eBay** - Turn your goods into cash by trading on eBay.  
Run an online charity shop – Set up an online shop in a marketplace with millions of visitors.

**Hold a special online auction** - Fundraising events on eBay are unrivalled for generating awareness and funding. Sell unique and special items to smash your fundraising targets.

Register with MissionFish: it's quick, simple and free. Once you've registered, any eBay seller can donate to your charity. Register for a seller account on eBay.co.uk Add your eBay ID as a 'Direct Seller' in your MissionFish account List an item, and choose to donate 100% to your own charity.

**Further information:** [www.missionfish.org.uk/fundraise/uk\\_fundraise.html](http://www.missionfish.org.uk/fundraise/uk_fundraise.html) and <http://pages.ebay.co.uk/ebayforcharity/>

### **how2fundraise.org**

**Priorities/details:** FREE on-line resource for the UK's 16 million volunteer fundraisers, from the Institute of Fundraising.

Raising money for good causes is easy and they can show you how. Share what you know and get inspired by others. Made possible by the support of The Vodafone UK Foundation and The Office of the Third Sector.

**Further information:** [www.how2fundraise.org](http://www.how2fundraise.org)



### **Funding Commission**

**Priorities/details:** NCVO (The National Council for Voluntary Organisations), the UK's leading umbrella body for civil society organisations, today announced the establishment of a new Funding Commission that will look at future financial provision across the whole range of civil society after 2010.

The new Funding Commission will: start work early in 2009; assess evidence drawn from wider civil society on the state of funding in the sector; respond to the sector's present concerns and uncertainty about funding over the next ten years and take responsibility for setting a new funding agenda; appoint a Chair by the end of this year. The Commission is expected to be up and running by early 2009. Its job will be to come up with practical and public policy proposals that ensure secure funding for the voluntary sector, for the longer term.

**Further information:** [www.ncvo-vol.org.uk](http://www.ncvo-vol.org.uk)

### **Welfare-to-work reform and the Third Sector**

**Priorities/details:** The Secretary of State for Work and Pensions has announced a Third Sector Taskforce to be led by acevo (Association of Chief Executives of Voluntary Organisations) and the Department for Work and Pensions (DWP) joint initiative will explore the potential role for the third sector in welfare-to-work reform, and make recommendations as to how that potential could be engaged.

The three main purposes of the DWP Taskforce are:  
To identify any impediments to the Third Sector playing a full and active role in welfare to work reform, and to recommend ways to remove these impediments.

To recognise outstanding good practice that could be replicated, and to recommend how this might be done;

To clarify the precise role and value of the third sector in welfare to work reform. What, if anything, can the third sector bring that others cannot?

The Taskforce met in early June and will meet on a monthly basis thereafter. The group will report back in January 2009.

**Further information:** <https://www.acevo.org.uk>

## Save energy with Carbon Trust

**Priorities/details:** The Carbon Trust has launched a free guide to reducing carbon emissions and cutting energy use in association with the Charity Commission. This new guide has been published to help the 190,000 registered charities in the UK, particularly those without a designated carbon manager, take action to save up to 20 per cent on their fuel bills through low cost or no cost energy-saving measures.



Energy is one of the largest controllable overheads for UK charities, with air conditioning and office equipment bills being particularly high. This new guide shows organisations how to increase their energy efficiency and is tailored to suit the diversity of the sector, taking into account the range of unique properties from which charitable organisations operate - including museums, hospices and commercial offices. By putting in place the simple energy-saving measures outlined in the guide, charitable organisations can begin cutting carbon emissions straight away, while generating financial savings and reducing operational costs.

**Further information:** Organisations can download or order the free publication (CTV036) online at: [www.carbontrust.co.uk/Publications](http://www.carbontrust.co.uk/Publications)

**If you are looking for funding and can't find exactly what you are looking for here we have the FunderFinder database at T3SC which you are free to use. Or you could use our Resource Room to fill in your application form, have a cup of tea, use the excellent resources and get some support.**

**T3SC (Tameside 3rd Sector Coalition)  
St Michaels Court Stamford Street Ashton OL6 6XN  
Telephone 0161 339 4985  
Email [hannah.powell@t3sc.org](mailto:hannah.powell@t3sc.org)**